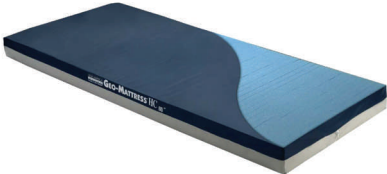
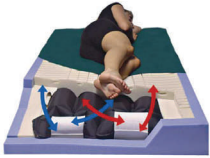

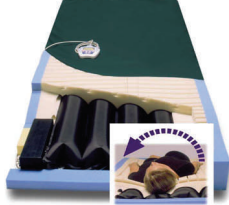



Support Surfaces

Medicare Part B Coverage Guidelines

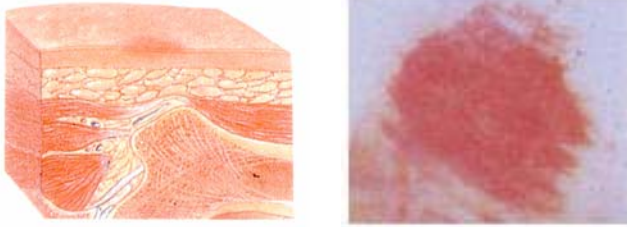
This is only a summary. Consult your DMERC, or your supplier manual for complete guidelines.

Group 1	Group 2			
<p>Geo-Mattress® HC</p>  <p>Code: E0184</p> <p>Therapeutic foam mattress replacement with cross-cut top and waterproof cover</p>	<p>PressureGuard® CFT</p>  <p>Code: E0373 – Non-powered</p> <p>“Constant Force Technology” Non-powered advanced pressure relieving mattress</p>	<p>PressureGuard® APM, APM², Deluxe</p>  <p>Code: E0277 – Powered</p> <p>Alternating pressure mattress replacements; [APM² also provides basic lateral rotation]</p>	<p>PressureGuard® Turn Select™</p>  <p>Code: E0277 – Powered</p> <p>Pendant controlled, programmable lateral rotation mattress replacement</p>	<p>PressureGuard® Easy Air™</p>  <p>Code: E0277 – Powered</p> <p>Low air loss therapy with alternating pressure</p>
<p>Covered for a patient under a comprehensive care plan* who is <u>either</u>...</p> <ul style="list-style-type: none"> ✓ completely immobile <p style="text-align: center;"><u>OR</u></p> <ul style="list-style-type: none"> ✓ has limited mobility or has pressure ulcer (any stage) on trunk or pelvis, <u>and</u> has any of the following: impaired nutritional status fecal urinary incontinence altered sensory perception compromised circulatory status 	<p style="text-align: center;">Covered for a patient who...</p> <ul style="list-style-type: none"> ✓ has multiple stage II ulcers on trunk or pelvis <u>and</u> ✓ has been on a comprehensive ulcer treatment program* for at least 30 days, including the use of a Group 1 support surface <u>and</u> ✓ ulcers have worsened or remained the same over the past month <p style="text-align: center;"><u>OR</u></p> <ul style="list-style-type: none"> ✓ has large or multiple stage III or IV pressure ulcer(s) on the trunk or pelvis <p style="text-align: center;"><u>OR</u></p> <ul style="list-style-type: none"> ✓ has had skin graft or flap surgery for ulcer on trunk or pelvis within last 60 days <u>and</u> ✓ has been on a Group 2 or 3 surface immediately prior to discharge from hospital or nursing facility within the past 30 days 			

*Documented comprehensive care plan/treatment program should generally include: education for patient and caregiver on prevention/management of pressure ulcers; regular assessment by a licensed practitioner; appropriate turning and positioning; appropriate wound care; appropriate management of moisture/incontinence; nutritional assessment and intervention.

Pressure Ulcer Stages

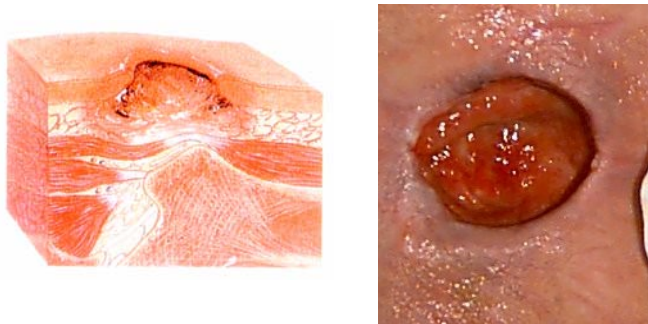
Stage I – Defined area of persistent redness. An observable, pressure-related changes in color, skin temperature, stiffness, pain.



Stage II - Partial thickness skin loss involving epidermis and/or dermis. Superficial, abrasion, blister, shallow crater.



Stage III - Full thickness, damage or necrosis of deep tissue, to but not through fascia. Deep crater, with or without undermining.



Stage IV - Full thickness. Extensive destruction, tissue necrosis, or damage to muscle, bone, or supporting structures.

