

# Geo-Mattress® Max

## Premium Therapeutic Foam Mattress



SURFACES



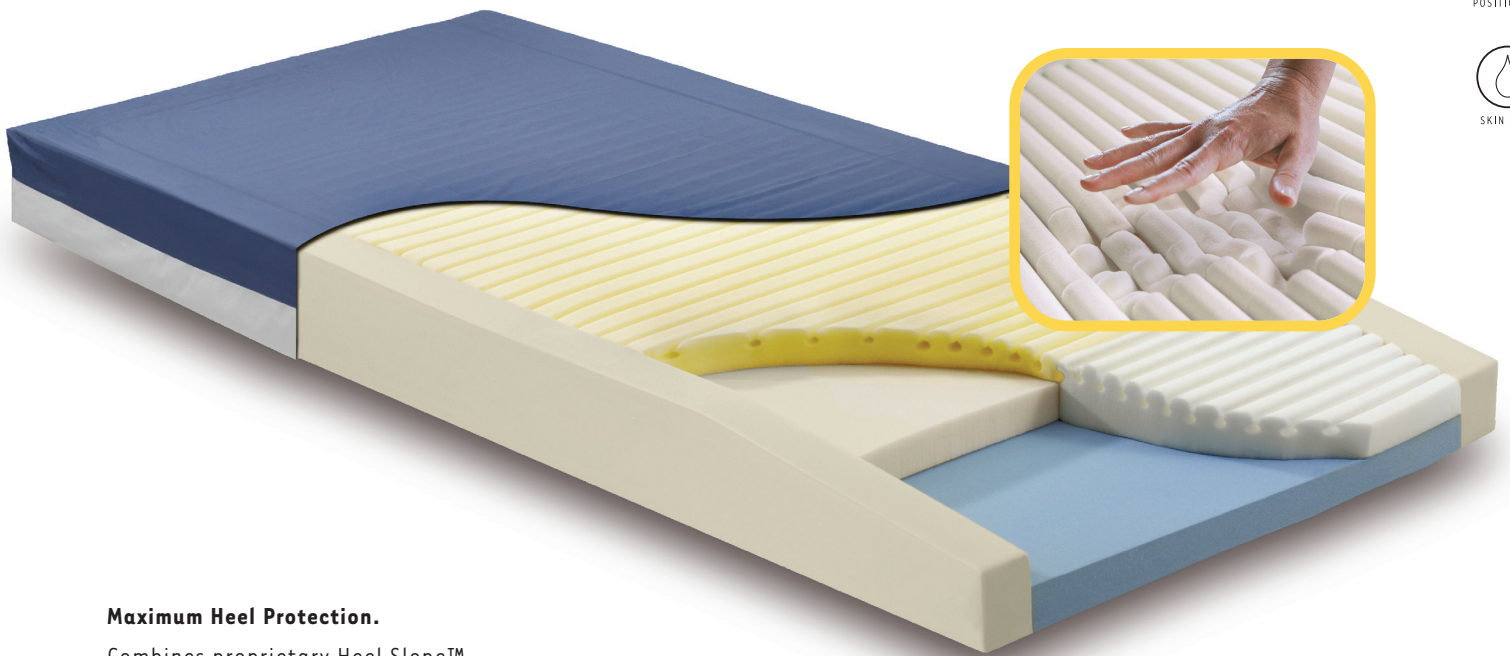
SEATING



POSITIONERS



SKIN CARE



### **Maximum Heel Protection.**

Combines proprietary Heel Slope™ and luxurious viscoelastic “memory” foam to deliver unsurpassed offloading of vulnerable heels.

### **Maximum Safety.**

Supportive firm perimeter bolsters facilitate safer patient transfers, help eliminate dangerous gaps, and add stability for edge-of-bed sitting.

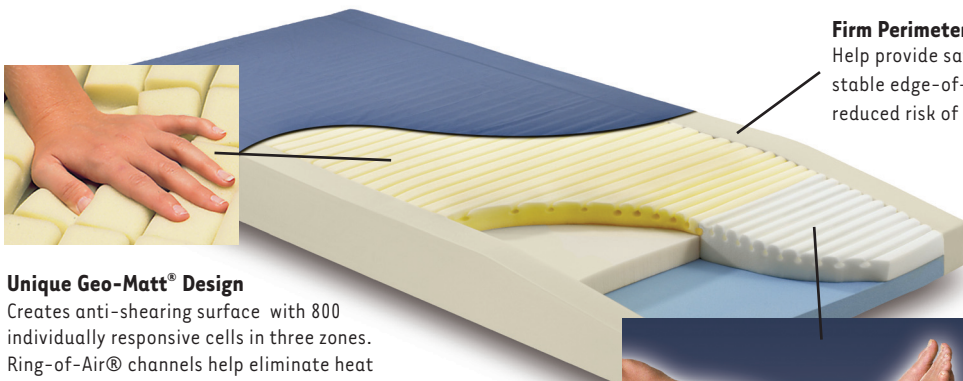
### **Maximum Performance.**

Clinically proven Geo-Matt® anti-shear surface, multi-tiered construction, 7-year warranty and 400 lb. capacity make it an exceptional offering.

**SPAN**America  
Innovative Solutions.

# Geo-Mattress® Max

## Premium Therapeutic Foam Mattress



**Firm Perimeter Bolsters**  
Help provide safer transfers, more stable edge-of-bed sitting, and reduced risk of gaps at siderails.

### Unique Geo-Matt® Design

Creates anti-shearing surface with 800 individually responsive cells in three zones. Ring-of-Air® channels help eliminate heat and moisture build-up.

- **Multi-tiered, progressive resistance core.**  
Premium, high-density foams are combustion-modified for conformance to Cal TB 117.
- **Fluid-repellent, flame-resistant top fabric.**  
Anti-microbial and anti-fungal. Neoprene/butyl coated underside yields extremely low moisture vapor transmission rate (MVTR). Conforms to NFPA 702 Class 1 and Cal TB 117E.
- **Exclusive hidden zipper cover design.**  
Flapless construction creates no collection points for contaminants. Combines with stain-resistant surface coating to ensure easy, thorough cleaning.
- **Flammability compliant.**  
All models are fire barrier version (FBV) as indicated by "-29" suffix, denoting certified conformance to NFPA 101 (Life Safety Code); Cal Tech Bulletin #117; 16 CFR Parts 1632 and 1633; and BFDIX-11.
- **7-year, non-prorated warranty.**  
Supports up to 400 lbs.  
All materials latex-free.



## By Design: Heel Protection Times Two.

Two distinct features to protect vulnerable heels, the site of roughly one third of all pressure ulcers<sup>1</sup>:

### Exclusive Heel Slope

Subtle taper redistributes load onto more pressure-tolerant lower legs while providing complete foot support. Documented to deliver heel pressures an average of 27% lower than leading competitors<sup>2</sup>.

### Viscoelastic foot section.

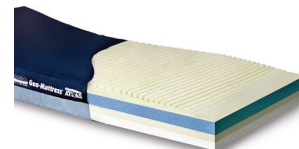
Luxurious, "memory" foam with individually-segmented Geo-Matt design. Enhanced immersion gently cradles heels.

1. Blaszczyk J. Make a Difference: Standardize Your Heel Care Practice. *Ostomy/Wound Management*. 1998;44(5):32-40.
2. McGrew, G. A Comparative Study of Interface Pressures on Two Hospital Polyurethane Foam Mattresses. *Clinical Reports: Series on Skin and Wound Care Management* 1997.

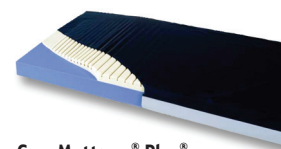
## A Geo-Mattress for every need:



**Geo-Mattress with Wings®**  
Supportive, raised perimeter design.



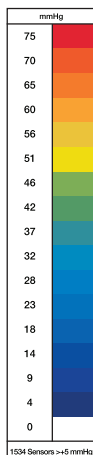
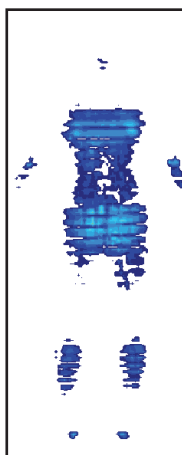
**Geo-Mattress Atlas®**  
Bariatric support up to 600 lbs.



**Geo-Mattress® Plus®**  
Dual layer, 6-year warranty.



**Geo-Mattress® Pro**  
Single layer, 5-year warranty.



**Computerized Pressure Mapping** confirms exceptional pressure distribution, extremely low peak pressures.

Subject cited:  
Male, 5'10", 175 lbs.  
Supine, with pillow.  
(Complete results available upon request).

Institutional Sizes		Consumer Sizes	
Item #	Description	Item #	Description
MX8435-29	84"L x 35"W x 6"H	* MX7539-29	75"L x 39"W x 6"H Twin
MX8035-29	80"L x 35"W x 6"H	* MX7554-29	75"L x 54"W x 6"H Full
* MX8032-29	80"L x 32"W x 6"H	* MX8060-29	80"L x 60"W x 6"H Queen
* MX7835-29	78"L x 35"W x 6"H	* MX8076-29	80"L x 76"W x 6"H King
MX7535-29	75"L x 35"W x 6"H	* allow additional lead time for these sizes	
<b>Weight limit:</b> 400 lbs.		<b>Mattress weight:</b> approx. 24 lbs.	
<b>Warranty:</b> 7 years.			

**SPAN**America  
Innovative Solutions.