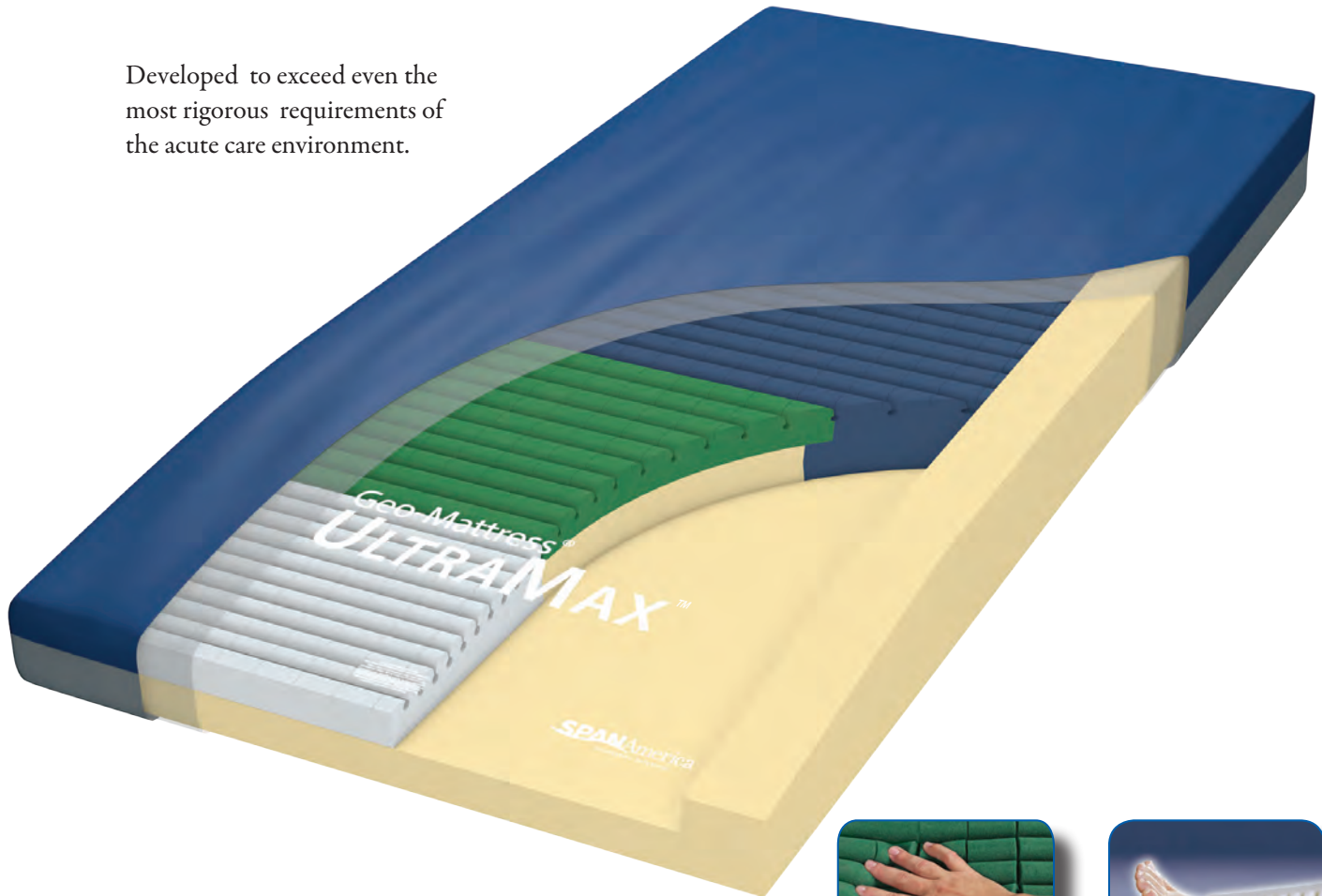


Geo-Mattress® *UltraMax*™



Non-powered pressure redistribution support surface

Developed to exceed even the most rigorous requirements of the acute care environment.



Ultra Resilient

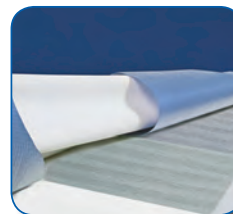
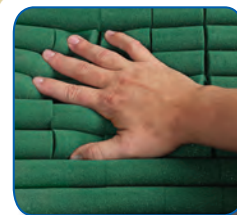
Exclusive UHP 500™ torso section and 3-dimensional Zoning™ design ensure support and durability not achievable with traditional HR, latex, or viscoelastic foams.

Ultra Comfortable

Precision-engineered to facilitate the sustained, restful sleep that can be a critical contributor to healing and recovery.

Ultra Effective

Geo-Matt® segmented surface and Shear Transfer Zone™ design deliver unsurpassed protection against shearing, pressure, and heat/moisture buildup.



SPANAmerica

better science. better care.

800-888-6752 www.spanamerica.com

©2018 Span-America Medical Systems, Inc.

Geo-Mattress® UltraMax™

Firm perimeter provides edge-of-bed stability.
Benefits: Fall prevention; safety during ingress, egress.



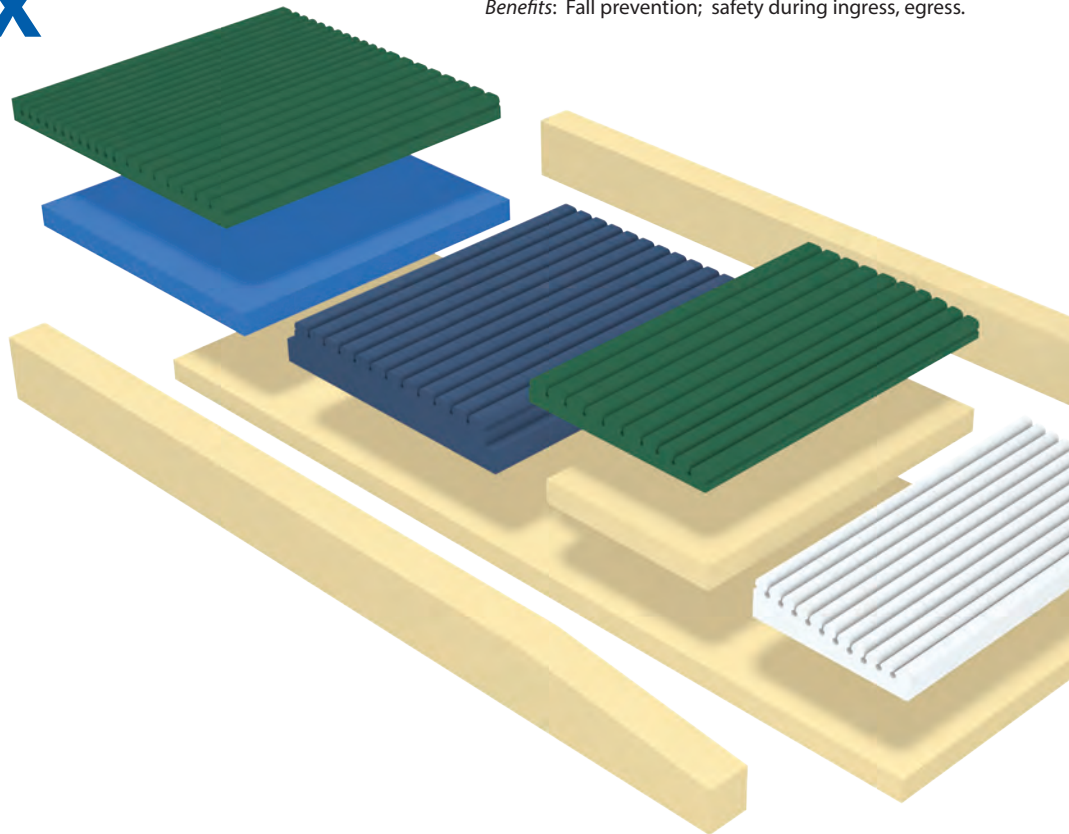
Segmented Geo-Matt® surface creates more than 800 individually articulating cells, ventilated by Ring-of-Air® channels.
Benefits: Clinically -proven protection against shearing; dissipates heat and moisture build-up.



3-Dimensional Zoning™ core design provides anatomically- calibrated levels of support and immersion throughout surface.
Benefits: Extreme comfort; optimized tissue load management; enhanced product longevity.

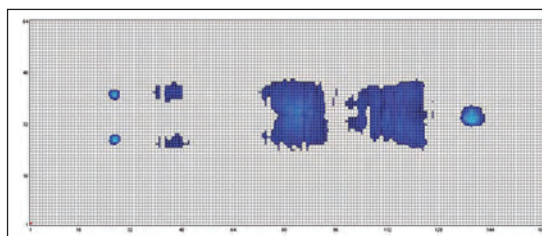


Two-way heel protection
Segmented breathable viscoelastic foam cradles the heel. Gentle Heel Slope™ redistributes pressure to more pressure-tolerant lower legs.
Benefits: Enhanced skin integrity; comfort.

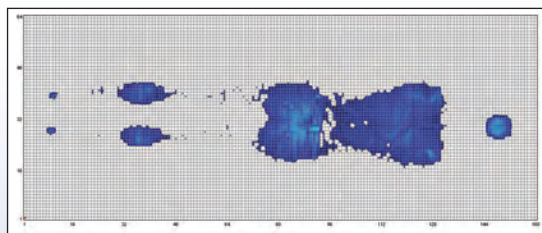


Digital Pressure Imaging

Computerized mapping confirms outstanding redistribution of pressure across the surface and low overall peak pressures, whether positioned flat or with Head of Bed elevated.



Subject cited: Female, 4'11 105 lbs



Subject cited: Male, 5'11 165 lbs.



NOTE: Pressure mapping results are representative only. Results will vary depending on a variety of factors including subject's position in bed, weight, body type, and position of frame.

Span-America exclusive:

UHP 500™ Ultra High Performance Foam

Specially formulated for the *UltraMax*, the unique cellular structure of UHP 500 gives it a combination of properties not achievable with any of the foams commonly used in medical support surfaces.

Durability and Support: The seat section of a typical support surface is exposed to the highest level of mechanical fatigue due to repeated gatching, compounded by the concentration of patient weight, especially with the head of the bed (HOB) elevated. To address this, the entire seat section of the *UltraMax* is built from UHP 500, which provides:

- A 55% higher Support Factor than typical medical-grade foams
- Unmatched protection from “bottoming out”, even with HOB elevated
- Superior resiliency and recovery, even when compared to typical HR foams



Consumer-like Comfort: UHP 500 is engineered to mimic the luxurious feel and longevity of natural latex, the foam used in top-of-the-line consumer bedding products.

- 100% Latex-free, 100% PBDE-free
- Won't trap heat or induce shearing like flat viscoelastic foams

Span-America exclusive:

Shear Transfer Zone® design

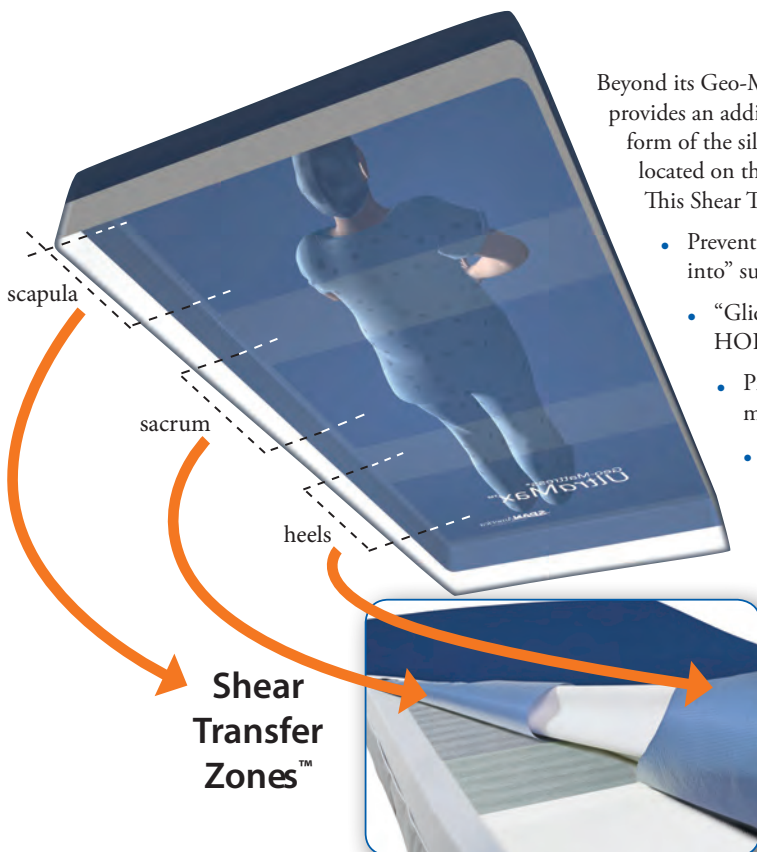
(US Patent Number 8,438,682)

Beyond its Geo-Matt® segmented top surface, the *UltraMax* provides an additional measure of shearing protection in the form of the silicone-coated, shear-minimizing fabric bands located on the underside of its bi-directional stretch cover. This Shear Transfer Zone design helps:

- Prevent heels, sacrum, and scapula from “digging into” surface
- “Glide” user back to original position following HOB elevation
- Protect against damaging effects of micro shear, macro shear, and rotational (pivot-induced) shear
- Provide patient stability by transferring shear to more shear-tolerant anchor points

Now made with
LifeSPAN™
fortified healthcare fabric

- Polycarbonate-fortified for unsurpassed resistance to damaging effects of diluted bleach and other aggressive cleaners and disinfectants
- Engineered for ideal combination of immersion and patient mobility
- Environmentally friendly



3-sided, flapped zipper
Benefits: Infection control; ease of cleaning; ease of replacement



Two reinforced handles
Benefits: ease of transport; longevity



Inner fire barrier
Benefits: Safety; regulatory compliance

Geo-Mattress[®] UltraMax[™]

Specifications

- **Weight Limit:** 500 lbs. (36"); 600 lbs. (39" and 42")
- **Warranty:** 8-year, all components. Non-prorated
- **Mattress Weight:** 24 lbs.

All components are 100% latex-free

All foams are 100% PBDE-free

Bi-directional Stretch Cover:

- Fluid-resistant
- Anti-microbial
- Tear-resistant
- Wipes clean with standard hospital-grade cleaners
- Two reinforced carry handles on one side
- Split non-skid bottom: helps reduce "gatching noise"

Flammability: Conforms to NFPA 101 (Life Safety Code™); CPSC 16 CFR Parts 1632 and 1633; Cal TB 117 & 129.

Versions also available for most common stretcher models.

¹ Based on full assessment of skin status and repositioning required, according to best clinical practice and judgement.

Indications for Use:

- Prevention of Stage 1-4 pressure injuries
- Early intervention for multiple Stage 1-2 and treatment of single Stage 3 pressure injuries¹
- Can be positioned off the injury in at least 2 positions
- Moderate to high risk for skin breakdown
- Decreased mobility
- Repositions frequently by self or caregiver

Item #	Dimensions
UMX7536-29	75"L x 36"W x 6"H
UMX8036-29	80"L x 36"W x 6"H
UMX8436-29	84"L x 36"W x 6"H
UMX85V-29	For recessed deck frames
UMX80CA-29	80" L for CareAssist+
UMX84CA-29	84" L for CareAssist+
UMX8039-29	80"L x 39"W x 6"H
UMX8042-29	80"L x 42"W x 6"H
UMX8439-29	84"L x 39"W x 6"H
UMX8442-29	84"L x 42"W x 6"H

Part of a complete line of healthcare beds and specialty support surfaces.



Encore[®]

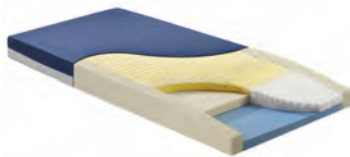


Advantage

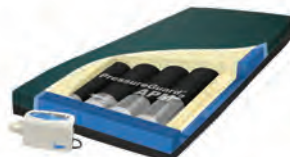


Rexx

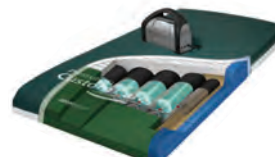
Encore, Advantage, and Rexx long term care beds



Geo-Mattress[®]
therapeutic foam series



PressureGuard[®]
air therapy series



PressureGuard Custom Care[®]
Non-powered & convertible series



Bariatric Solutions

*Hill-Rom is a mark, and CareAssist[®] is a registered mark, of Hill-Rom[®] Services, Inc.

Span-America products are protected by one or more of the following U.S. patents: 6,782,574; 6,256,822; 7,100,229; with additional patents pending

SPANAmerica
better science. better care.